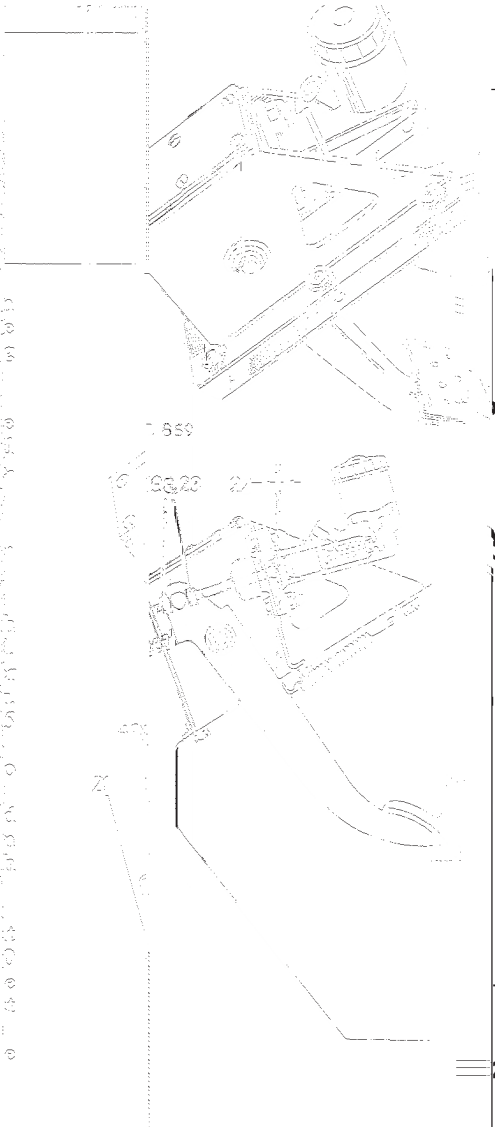


- 15 Reverse 8 to 11.
 16 Place the gasket in position, securing flange of the dust cover to retain the gasket.
 17 Reverse 8 to 6.
 18 Bleed the clutch hydraulic system. 33.15.01.

- Clutch pedal and master cylinder.
 19 Remove the top cover and dust cover.
 20 Check the distance from the edge of the clutch pedal to the correct distance is 241 (9.5 in.).
 21 Adjust the pedal stop, as required, to obtain the correct distance.
 22 Adjust the master cylinder until there is approximately 0.062 (0.062 in.) free play between the push rod and the master cylinder.
 23 Tighten both locknuts.
 24 Check the clutch pedal so that there is a minimum of 6 (0.25 in.) free movement of the pedal.
 25 Fit the gasket and top cover to the clutch pedal bracket.
 26 Reverse 1 and 2.



DATA

- Clutch pedal pivot bush diameter
- Clutch pedal height setting
- Master cylinder push rod free play
- Clutch pedal free play (minimum)

mm ± 0.01 mm (0.750 in. ± 0.0005 in.)
 5.320 mm (0.210 in.)
 0.062 mm (0.0025 in.)
 6.0 mm (0.236 in.)

1RC657

1S.87

- 14 Remove the oil plug and fill the pedal shaft with clean engine oil and refill.

SLAVE CYLINDER

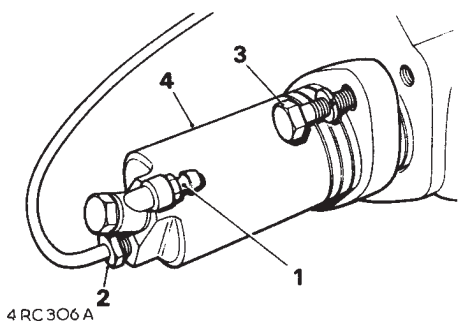
Remove and refit 33.35.01

Removing

- 1 Unscrew the bleed valve to release the hydraulic fluid.
- 2 Disconnect the fluid supply pipe from the slave cylinder.
- 3 Remove the two bolts securing the slave cylinder.
- 4 Withdraw the slave cylinder.

Refitting

- 5 Enter the push-rod through the hole in the rubber boots so that it locates correctly inside the cylinder.
- 6 Fit the slave cylinder bleed valve uppermost, and secure with the two bolts.
- 7 Fit the fluid supply pipe.
- 8 Bleed the clutch hydraulic system as described in operation 33.15.01.
- 9 Check the system for leaks with the brake pedal depressed and with the system at rest.
- 10 Fit the fluid pipe.

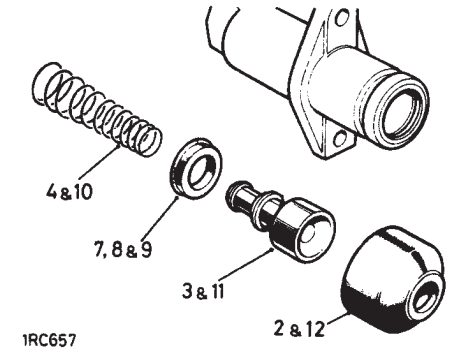


SLAVE CYLINDER

Overhaul 33.35.07

Dismantling

- 1 Remove the slave cylinder. 33.35.01.
- 2 Withdraw the dust cover.
- 3 Expel the piston assembly, applying low pressure air to the fluid inlet.
- 4 Withdraw the spring.



Inspecting

- 5 Clean all components with Girling cleaning fluid and allow to dry.
- 6 Examine the cylinder bore and piston, ensure that they are smooth to the touch with no corrosion, score marks or ridges. If there is any doubt, fit new replacement.
- 7 The seal should be replaced with a new component.

Assembling

- 8 Smear the seal with Castrol-Girling rubber grease and the remaining internal items with Castrol-Girling brake and clutch fluid.
- 9 Fit the seal, large diameter last, to the piston.
- 10 Locate the conical spring, small diameter first, over the front end of the piston.
- 11 Smear the piston with Castrol-Girling rubber grease and insert the assembly, spring end first, into the cylinder.
- 12 Fill the dust cover with Castrol-Girling rubber grease and fit the cover to the cylinder.
- 13 Refit the slave cylinder. 33.35.01.