

TECHNICAL BULLETIN



MODEL/DERIVATIVE:
Discovery Series II (LT)

Bulletin N°: **0117**
CDS. ref: **L8861bu**
Issue: **1**
Date: **03.07.03**

AFFECTED RANGE:
All derivatives

PROBLEM:

WATER INGRESS - WET HEADLINING

Water may enter the 'A' post upper corners and exhibit anywhere along the windscreen.

CAUSE:

One or both of the following missed / poor sealing operations may have permitted water into the vehicle:

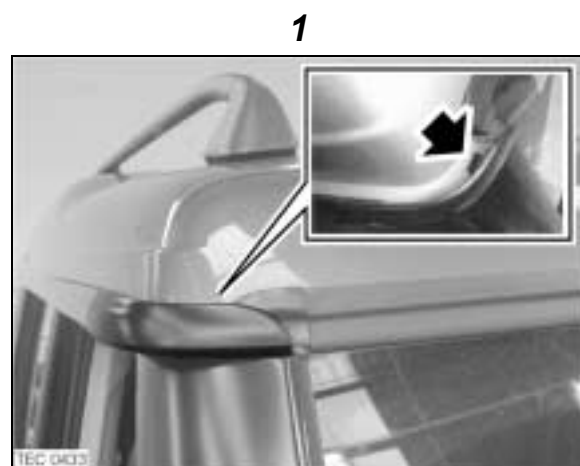
- Gap / void in the sealant on the drip rail
- Pin holes / cracks in the sealant (putty) around the 'A' post / roof panel, and drip rail joints

ACTION:

Where a complaint of the above is confirmed, follow the inspection procedure below to establish the cause of the leak and then follow the appropriate rectification procedure.

Inspection procedure

1. Carefully lift the clip securing the drip rail corner finisher to the drip rail (arrowed in illustration 1), and inspect the drip rail seam joint for a gap / void.
2. If a gap / void is present, refer to the drip rail rectification procedure.



3. Carefully pull back the corner of the windscreen upper finisher and using tape secure it to the windscreen (see illustration 2).
4. Inspect for pin-holes / cracks around the 'A' post / roof panel, and the drip rail sealed joints (arrowed in illustration 3).
5. If pin-holes / cracks are found; refer to the 'A' post / roof panel rectification procedure.
6. If no pin-holes / cracks are found; remove tape securing the windscreen upper finisher to the windscreen and push the windscreen upper finisher back into position.

'A' post / roof panel rectification procedure

1. Clean the area and fill any pin-holes / cracks with sealant (inset in illustration 4).

NOTE: *The Sealant must be applied evenly. Ensure the sealant does not prevent satisfactory installation of the windscreen upper finisher.*

2. Remove tape securing the windscreen rubber to the windscreen and push the windscreen upper finisher back into position.
3. Apply water to the windscreen upper corner and check for leaks. Rectify leaks as necessary.

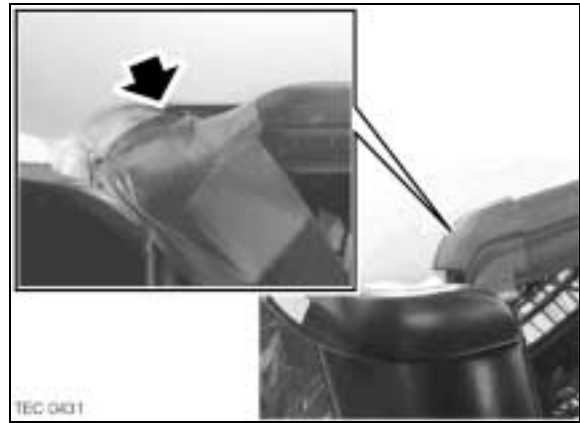
Drip rail rectification procedure

1. Remove the windscreen side finisher. Refer to Workshop Manual, part number VDR100090 (8th edition), Exterior Fittings, Side Finisher - Windscreen, repair number 76.43.39.
2. Release and remove the drip rail corner finisher from the drip rail.
3. Clean the drip rail.
4. Fill the gap / void with sealant (see illustration 5).

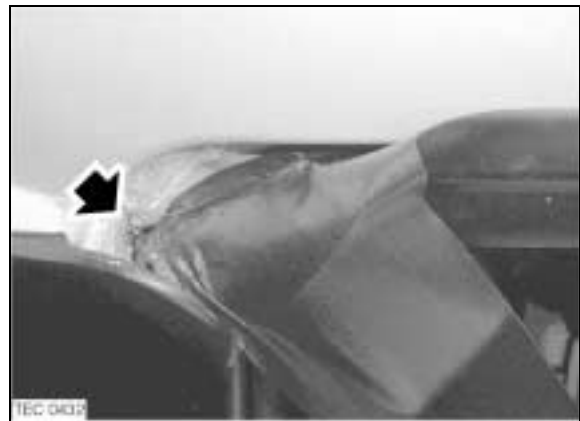
NOTE: *The sealant must be applied evenly to the drip rail. Ensure the sealant does not prevent satisfactory installation of the drip rail corner finisher.*

5. Position the windscreen side finisher to the 'A' post.

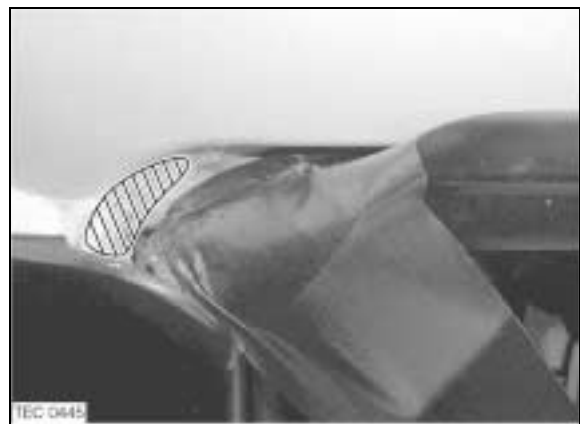
2



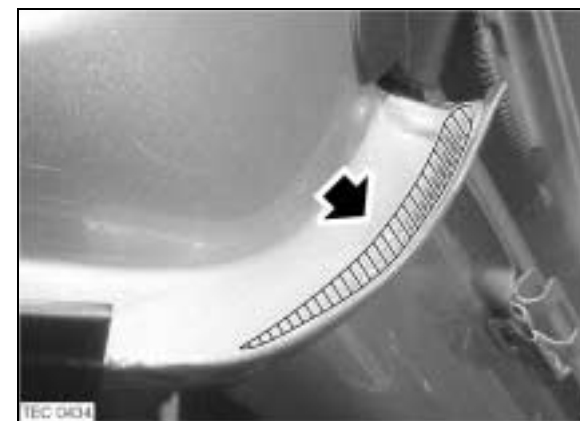
3



4



5



6. Apply water to the drip rail and check for leaks. Rectify leaks as necessary.
 7. Fit the windscreen side finisher.
 8. Fit the drip rail corner finisher to the drip rail.
-

PARTS INFORMATION:

79086L - Rivet plastic - 3 per side

Polyurethane Sealant (Terostat 33) - locally sourced

WARRANTY CLAIMS:

Use Complaint Code: 8G1N

Use S.R.O.: 75.10.21 - Inspection - includes sealing the 'A' post / roof panel

Time allowance: 0.10 Hrs

NOTE: *Claim SRO 75.10.21 only for inspection of both causes and for sealing the 'A' post / roof panel.*

Use S.R.O.: 75.10.22 - Inspection - includes sealing the drip rail and 'A' post / roof panel

Time allowance: 0.20 Hrs

NOTE: *Claim SRO 75.10.22 only for inspection and sealing both causes or for inspection of both causes and for sealing the drip rail.*