

Vehicle immobilised and / or remote plip will not activate central locking

Below is a process to attempt resynchronisation of the 10AS Alarm Remote with the Alarm ECU.

It is advisable to obtain the Emergency Key Access (E.K.A) code to assist with the process.

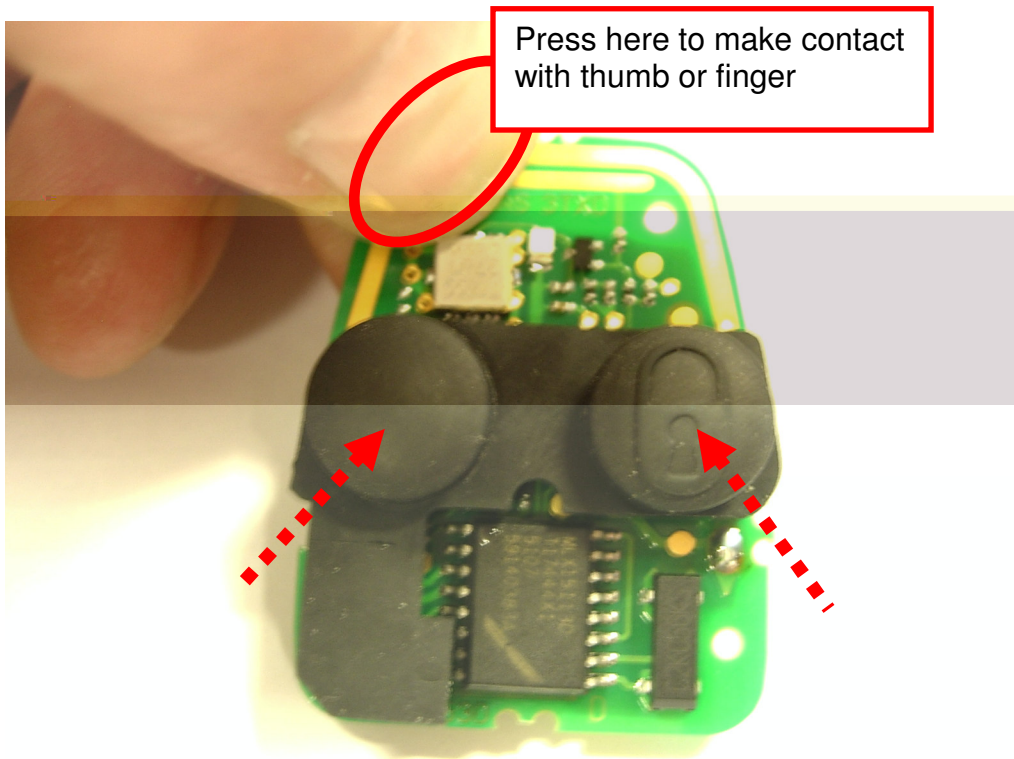
1. Press the remote unlock button 4 or more times in close proximity to the car. If a beep is heard the remote has been registered / resynchronised, repeat with all remotes and return vehicle to customer.

If the remote fails to synchronise continue to step 2.

2. Open the remote control case and remove the battery. Measure the battery voltage, if it is 2.7V to 3V continue to step 3. If it is less than 2.7V obtain a new battery but do not install it back into it's carrier at this stage, continue to step 3.

3. Now remove the PCB assembly from the plastic housing. This is made easier to do by pressing the lock / unlock buttons to release it.

With the PCB free ensure that it is held such that there is contact between your finger / thumb and the electrical printed circuit as shown below. Now press the lock and then unlock buttons 3 times (alternate between the two), continue to next step.



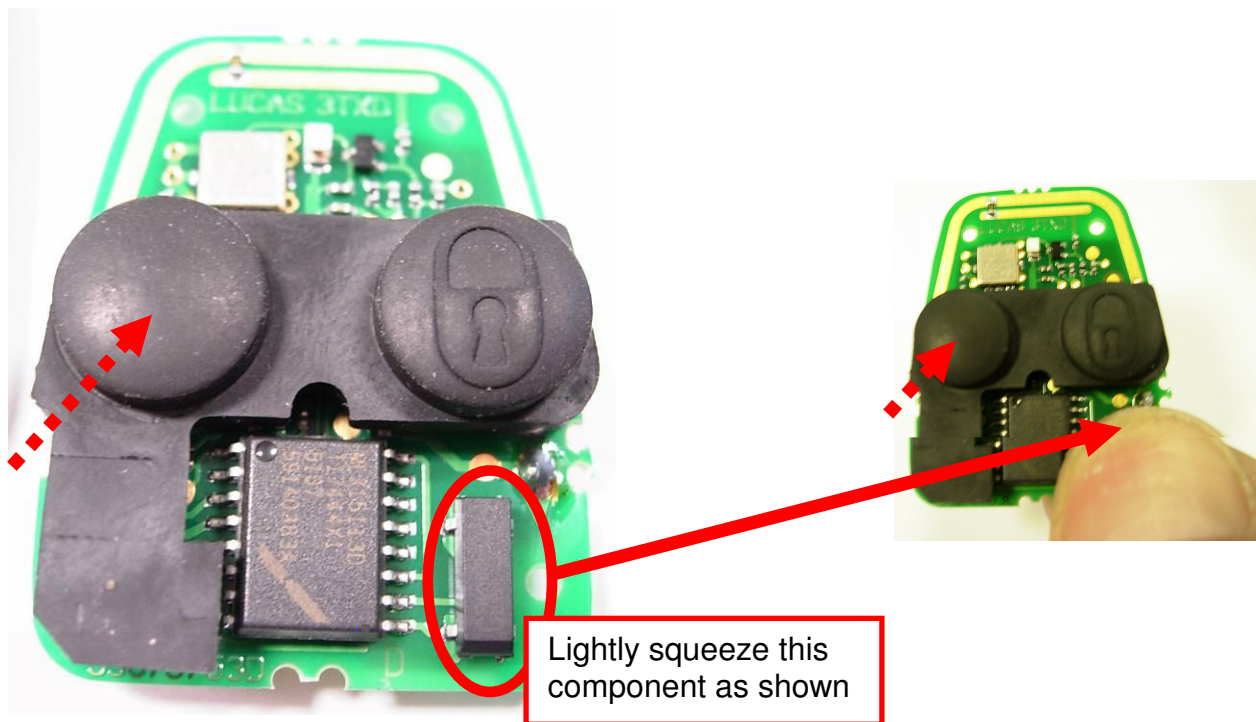
4. Fit the battery to its carrier on the PCB and ensure polarity matches. Operate the unlock button 4 or more times in quick succession. If there is a beep sound and / or

the remote and return the vehicle to the customer.

If there is no beep sound or sign that the vehicle has unlocked, continue to step 5.

5. Lightly squeeze (continually throughout this operation) the component circled below with your thumb on the component and index finger behind on the battery carrier and operate the unlock button 4 times or more. If there is a beep and or the door unlocks, the remote is registered and re-synchronised.

Note: The remote battery should remain in place throughout this operation



Re-assemble the remote control and return the vehicle to the customer.

If the above attempts have not rectified the concern it will be necessary to enter the EKA code following the standard EKA procedure listed in the vehicle hand book. If the car starts at this point, switch off the engine, then try to resynchronise the remote control by pressing the door unlock button 4 or more times.

If the synchronisation of the remote is not successful or the EKA code does re-mobilise the vehicle, follow the standard repair method using the SDD tool.

Important: Note the 5 second timing requirement for Remote button presses when pairing them in SDD ... Read and follow the on screen prompts or pairing will not be achieved.